



SPORT
SERIES

KEGEL NAVIGATION PATTERNS





TURNPIKE 2441

With the conditioner being applied in a flat manner on the forward travel, and with a little shape created on the journey back towards the foul line, this makes the last third of this pattern very flat.

So when bowling on the Turnpike, you better pay strict attention to your direction or you will pay a hefty toll!

Latitude Ratio Coordinates

22' 2.4 to 1

39' 1.1 to 1

Longitude Ratio Coordinates

Outside Taper 3.0 to 1

Inside Taper 5.3 to 1

Pattern Distance

41 Feet

Pattern Volume

Forward 11.10 mL

Reverse 14.20 mL

Total 25.30 mL



KEGEL NAVIGATION PATTERNS

SPORT SERIES



TURNPIKE 2441

Latitude Ratio Coordinates

22' 2.4 to 1
39' 1.1 to 1

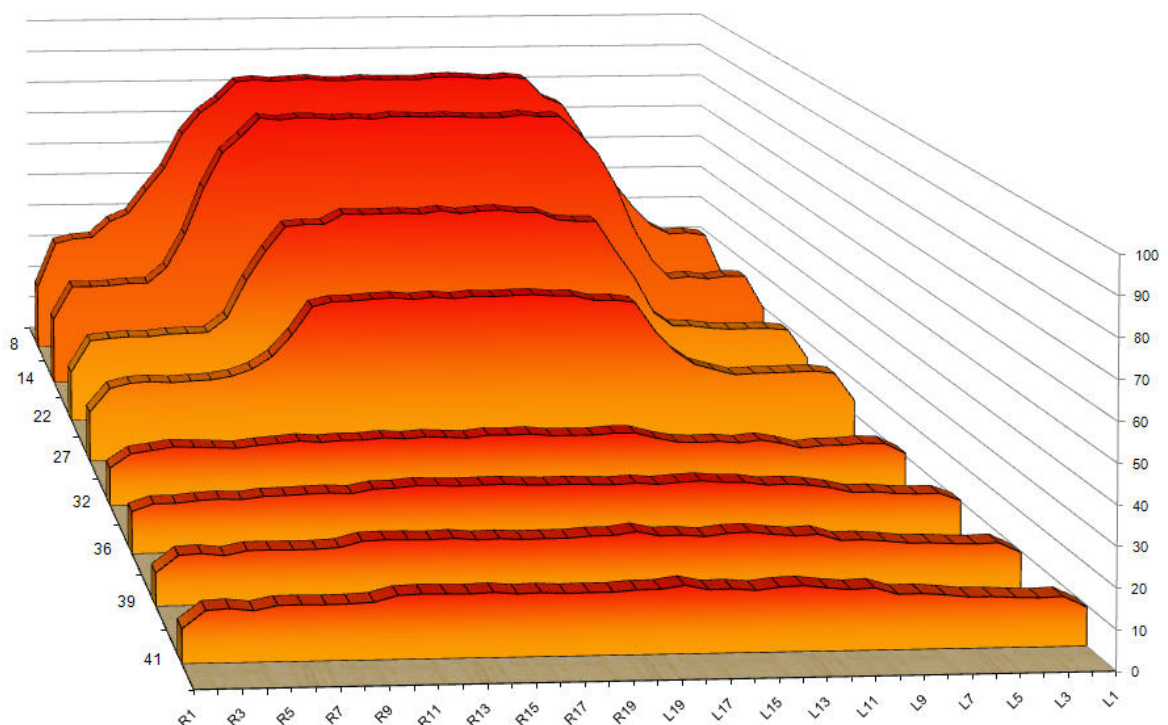
The 2D chart below was generated by Lane Monitor showing select tapes and ratios at key distances throughout the pattern. USBC Sport Bowling ratios are calculated at 22' and 2' before the end of the pattern. All Latitude Ratio Coordinates are calculated from these two distances.

Latitude ratios in the last half of the pattern can be an indicator of the difficulty of a pattern. Generally, the lower the ratios down lane, the more difficult the pattern.

Longitude Ratio Coordinates

Outside Taper 3.0 to 1
Inside Taper 5.3 to 1

The 2D chart also gives a visual of how the conditioner tapers off from the front to the end of the pattern.





KEGEL NAVIGATION PATTERNS

SPORT SERIES



TURNPIKE 2441

Kegel Sanction Technology™ Lane Machine Settings

Oil per Board (Pump Setting): 50 µL

Pattern Distance: 41 feet

Reverse Drop Brush: 41 feet

Forward Settings										
Screen #	Left End of Stream	Right End of Stream	# Loads or Streams	Travel Speed (in/sec)	Beginning Distance of Load (feet)	Ending Distance of Load (feet)	# Boards Crossed per Load	Total Boards Crossed	Total Volume of Oil (µL)	
01F	2	2	6	18.00	0.00	12.70	37	222	11100	
02F	2	2	0	18.00	12.70	31.00	0	0	0	
03F	2	2	0	26.00	31.00	36.00	0	0	0	
04F	2	2	0	30.00	36.00	41.00	0	0	0	
05F										
06F										
07F										
08F										
09F										
Forward Buff Screens: 3			Forward # Boards Crossed Volume mL					222	11.10	
Reverse Settings										
Screen #	Left End of Stream	Right End of Stream	# Loads or Streams	Travel Speed (in/sec)	Beginning Distance of Load (feet)	Ending Distance of Load (feet)	# Boards Crossed per Load	Total Boards Crossed	Total Volume of Oil (µL)	
01R	2	2	0	30.00		32.00				
02R	12	12	2	18.00	32.00	26.90	17	34	1700	
03R	11	11	2	18.00	26.90	21.80	19	38	1900	
04R	10	10	2	14.00	21.80	17.90	21	42	2100	
05R	9	9	2	14.00	17.90	14.00	23	46	2300	
06R	8	8	2	14.00	14.00	10.10	25	50	2500	
07R	2	2	2	14.00	10.10	6.20	37	74	3700	
08R	2	2	0	10.00	6.20	0.00				
09R										
Reverse # Boards Crossed Volume mL								284	14.20	
Forward plus Reverse Boards Crossed Volume mL								506	25.30	





KEGEL NAVIGATION PATTERNS

SPORT SERIES



TURNPIKE 2441

The charts on this page are generated by Kegel's KOSI software from the lane machine program sheet.

The **OVERHEAD CHART** on the right shows where the conditioner is applied on both the forward and reverse screens. The gradient area is a calculation of how the conditioner might bleed off the buffer brush.

The **COMPOSITE GRAPH** below shows the total amount of conditioner applied to every board. A good way to think about this graph is to envision all the conditioner on the lane being pushed back to the foul line. Once all the conditioner is stacked up, this is what it would look like.

